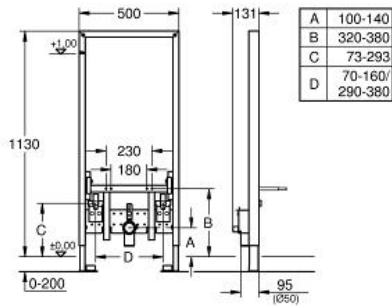


Rapid SL Wall Carrier for Bidet

MODEL # 38553001

Pure Freude
an Wasser



Product Description:

Rapid SL Wall Carrier for Bidet

Standard Specification:

- 44" installation height
- Powder coated self-supporting steel frame
- For on-the-wall installations or studded walls
- Pre-assembled
- Height adjustable fitting connections
- Quick adjustment, lockable
- Mounting material
- TÜV approved
- Bidet mounting screws
- HT-outlet elbow (Ø 2")
- Seal (Ø 1 1/4")
- 2 x 1/2" noise protected fitting connections
- Mounting material for bidet
- **Accessories sold separately for on-the-wall installation**

Color:

□ 38553001